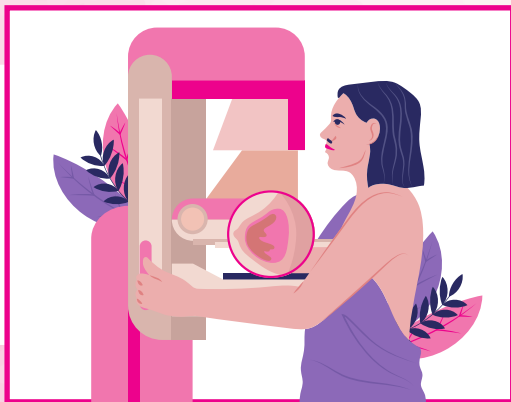


# HOW DO MAMMOGRAMS WORK?



Mammograms are done with a machine designed to look only at breast tissue. This allows for the radiologist to search for early signs of breast cancer or other problems.

The machine takes x-rays at lower doses than the x-rays done for other parts of the body such as the lungs or bones.



The mammogram machine has two plates that compress or flatten the breast to spread the tissue apart.

The mammogram machine's plates give a higher quality picture and allows less radiation to be used.

